

UN-GGIM
UNITED NATIONS
COMMITTEE OF EXPERTS ON
GLOBAL GEOSPATIAL
INFORMATION MANAGEMENT

Meeting the Changing National Geospatial Information Needs

Palitha Udayakantha
Surveyor General - Sri Lanka

Sri Lanka

Location

- Latitude 5 55' 10" - 9 50' 6" North
- Longitude 79 31' 19" - 81 52' 36" East

Area

- 65610 Km²

Population

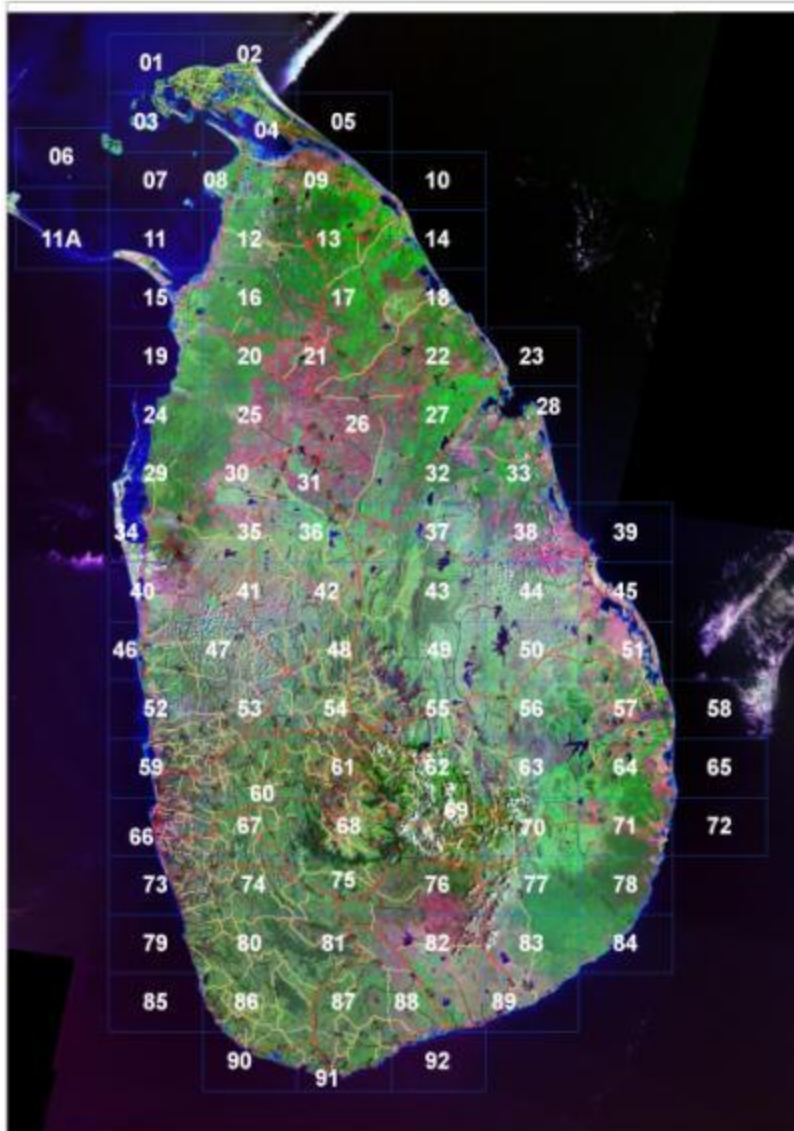
- 20 Million



Survey Department

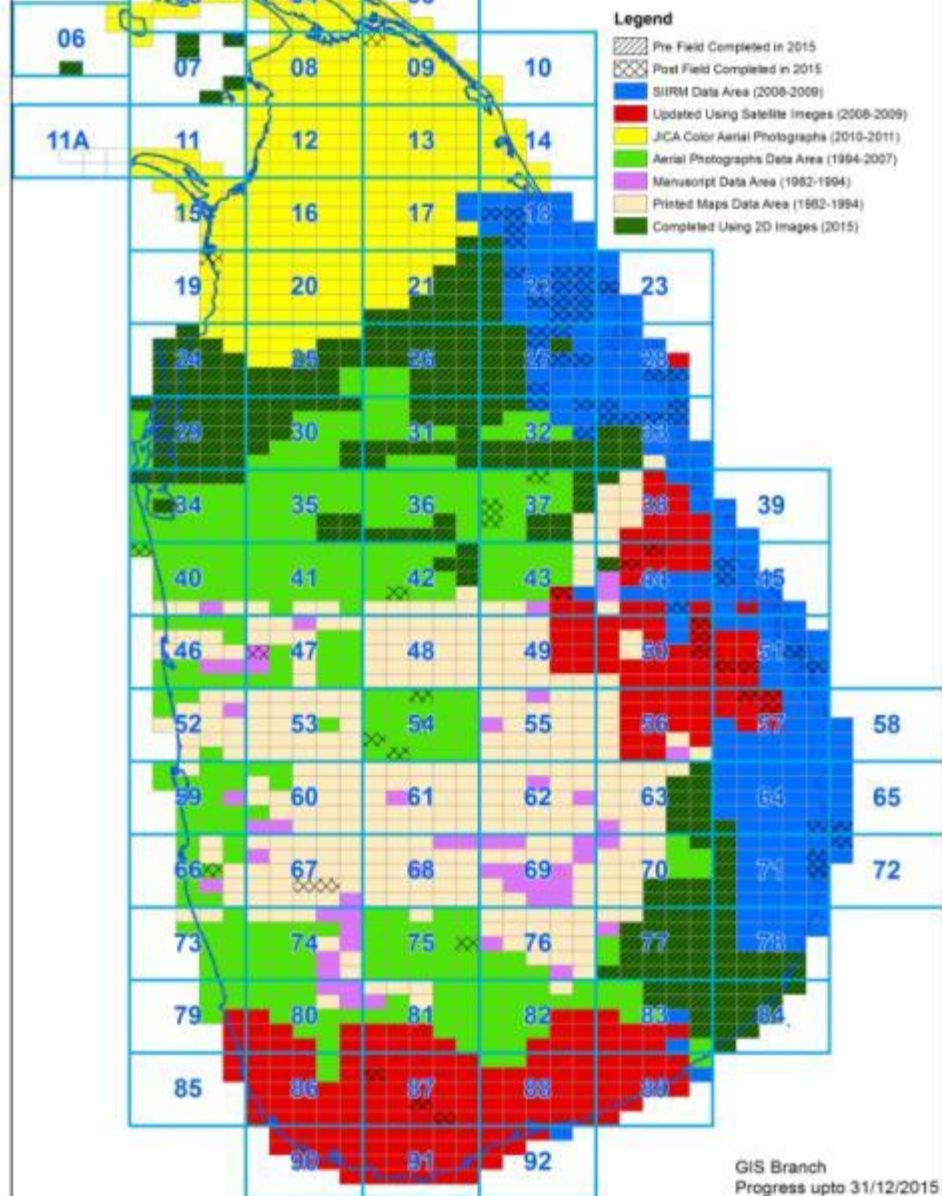
- Is the National Mapping and Surveying Agency
- Conventional tasks Statutory / Cadastral Surveys
- 1:50,000 and 1:10,000 mapping covering whole country
- Used to make our products and others are expected to use them – Situation is changing and others are demanding
- We become National Geospatial Information Management Agency in new trend of diminishing boundaries between Surveying and Mapping

Topo50 Layers



- Admin (DS Division)
- Buildings
- Grid
- Hydro (Streams, Tanks)
- Trans (Roads, Railroad)
- Landuse
- Places
- Reserves
- Terrain (Contour, Spot Heights)
- Utility (Power Line)

1:10,000 Digital Topographic Database Updating Progress



50k and 10k Mapping Completed

- Cadastral survey Program moving slowly
- Commenced in 2007 “Bim Saviya”
Purely by ground methods
- 1.0 Mn land parcels completed up to 2015 out total 12 Mn.

Changes in Government Policy

- Government wants to accelerate land grants to people and make 1.0 Mn. free hold grants in two years. Land needs to be identified
- Need to identify potential lands for development purposes
- Completed in possible shortest time period
- Not possible to increase number of Surveyors

Need for a unified parcel map

- Need has been identified and methodologies revised in order to achieve this target.
- Fit for purpose approach taken and Combination of methods will be used.
- Different Ground surveys methods in combination with Images (Satellite /Aerial / Lidar) depending on the need and availability.
- Data form all possible sources incorporated– Hardcopy Maps.
- Completed in five (05) Years
- Public - Private Partnership is a key strategy

Addressing Changing Needs

- Need of data at a more detailed level / Especially for disaster management activities.
- Buildings layer – Classification - Hospitals / Schools with further information – Urban Development Authority is in the process of collecting building
- Need for more accurate elevations – flood monitoring
- Rainfall data / River levels
- Updating data / New openings have to be looked into
- Making data available at time of need
- Single organization cannot do them all – Co-operation

NSDI Sri Lanka

- We have realized that this is a joint activity where the participation of all stakeholders is required.
- Data producers, Value addition, users, IT infrastructure and technical support, Industry, Application development
- Data capture and Dissemination is also equally important

Present Status

- Formal Policy approval was received in September 2013
- Agreed to pilot on Disaster Management and Environmental Management
- NSDI working group formed – Virtual NSDI office established
- Road Map prepared / Development of Map Portal – Procurement Process commenced.
- Survey Department also has developed a metadata site / www.sdi.survey.gov.lk
- Coordinated by Inter Ministerial Committee – Strong Driving force is required

Are we ready to meet the demand

- Technological issues - Map Portal and application development
- Geodetic Reference Network - CORS or other referencing / Moving to World Geodetic Datum is being discussed
- Land Registries and Title registries will be connected to parcel map – ownership, rights and restrictions
- Will ensure updating information on ownership and parcel changes
- Local Government Authorities will monitor fragmentation and development – will ensure changes are updated

Working Group – July 2015

- Ministry of Lands / Survey Department
- Ministry of Disaster Management / Disaster Management Centre
- Information and Communication Technology Agency
- International Water management Institute
- Ministry of Environment / Central Environmental Authority

www.sdi.survey.gov.lk

- All Spatial Data available with Survey Department are published in Metadata site
- Data Standards / Formats are defined
- Policies related to each dataset is published
- Other data providers will have to brought in.
Make them feel they are responsible partners of the activity

Multipurpose Parcel based land information

System will be the ultimate solution

- Land Administration plus other activities
- Development Planning and monitoring
- Disaster Management
- Environmental Management
- Evidence based decision making
- Equity and good governance

Goodwill or Enforcement

- Right now organizations join the activity voluntarily.
- In time to come it may need to make it mandatory to all State agencies to join declare and share possible data sets.

Small Advertisement

- 37th Asian conference on Remote Sensing will be held in Colombo from 17th to 21st October 2016 – Hosted Jointly by Survey Department and Asian Association on Remote Sensing
- With the theme of “Spatial Data Infrastructure for Sustainable Development”
- Ideal forum to discuss related matters in detail
- Welcome to Colombo
- www.acrs2016.org



37TH ASIAN CONFERENCE ON REMOTE SENSING

SPATIAL DATA INFRASTRUCTURE
FOR SUSTAINABLE DEVELOPMENT

COLOMBO - SRI LANKA

[Home](#)

[The Conference](#)

[Visit SL2016](#)

[Registration](#)

[Contact Us](#)

[Sign In](#)

Conference venue

*Galadari Hotel ,
64 Lotus rd, Colombo 1,
Sri Lanka*



Thank you